

Annual Report.

2016



Lord's Taverners Northern NSW Inc.
PO Box 4133, Goonellabah
NSW 2480

Branch Patron: Adam Gilchrist AM
President: Denis Byrne
Chairman: Stan Gilchrist OAM

Twelfth Man: H.R.H. The Duke of Edinburgh, K.G., K.T., O.M., G.C.B., A.K.
National Patron: HE General The Hon Sir Peter Cosgrove A.K. M.C (Retd)

Table of Contents

<u>President's Report</u>	<u>3</u>
<u>Chairman's Report</u>	<u>3</u>
<u>T20 Primary Committee</u>	<u>4</u>
<u>Grants Committee</u>	<u>4</u>
<u>Cricket Placements Committee</u>	<u>5</u>
<u>Our House Committee</u>	<u>6</u>
<u>T20 Secondary Committee</u>	<u>6</u>
<u>Internship Committee</u>	<u>7</u>
<u>Regional Development Committee</u>	<u>7</u>
<u>Sports Camp Committee</u>	<u>8</u>
<u>University Scholarships Committee</u>	<u>9</u>
<u>Disabilities Sports Committee</u>	<u>10</u>
<u>Events Committee</u>	<u>11</u>
<u>Social Committee</u>	<u>11</u>
<u>Financial Reports</u>	<u>12-14</u>
<u>Our Corporate Sponsors</u>	<u>15-16</u>

President's Report

I'm privileged to present to you the Lord's Taverners northern NSW Annual Report for 2015/16. In this Report you'll read about all the activities we've been involved in over the year. The Branch has strengthened as new members and Sponsors have come to join us. With assistance from our Sponsors we now assist four Scholarship winners studying at SCU and one at UNE Armidale. With more Sponsors from across the Divide we can increase our number of Scholars at UNE.

As we welcome new members we are trying to have many of them involved in the Our House dinners on Tuesday and Thursday nights.

We are adding a new activity either later this year or early in 2017. This is a Residential cricket clinic for disadvantaged youth who continually struggle to make Representative teams. The clinic will be based at St John's College Woodlawn for four days and the youngsters will be coached by local qualified cricket coaches.



Apart from these essential activities, we will be seeing a changing of the Guard at the AGM as Stan retires from the position of Chairman and is succeeded by Graeme Hoskins. Stan is the founder of this Branch and through his experience, passion for the objective of Taverners, hard work and management abilities, our Branch is running smoothly and efficiently. Fortunately Stan will remain on the Executive and involved with committees into the future. Ever by his side is

June his wife to whom we must acknowledge as being the inspiration behind our dinners at Our House. We Taverners, and the people of Lismore owe Stan and June a great debt of thanks for the work they've already done and for their future work. Graeme has been heavily involved with selecting youngsters to go to the UK on annual cricket scholarships, guiding them through the administration before, during and following their trips as well as arranging host Clubs. The changeover will be seamless as we've been working at it for six months. It has been a pleasure to work alongside Stan and I look forward to working with Graeme. I feel sure that you'll join me in thanking Stan for his work and wishing him and June a pleasant future. Stan, have a rest!!
Denis Byrne.

Chairman's Report.

It is really special for me to be able to stand down as Chairman in favour of Graeme Hoskins. Graeme is an outstanding administrator as has been shown in his Chairmanship of the Cricket Place-ments Committee. He is keen, able and ready to go—a perfect fit in our Succession Planning policy. I continue to be in awe of the leaders of our fourteen Program Committees. Firstly, to lead a charitable organisation which has fourteen viable and effective separate programs is fantastic, and I will enjoy watching the ongoing growth of this multi-disciplinary organisation.



I want to congratulate and thank all of the special volunteers who achieve so much in Northern NSW and beyond. Their leadership and that already exhibited by our President, Denis, and Chairman-elect, Graeme, prospers well for a fantastic future. My immediate mission will be to further increase membership, gain more corporate sponsorships and to grow the wonderful relationships we have with the regional centres, working with our Captains.

Thanks to everyone for your support and encouragement over the last seven years.
Stan Gilchrist.

T20 Primary Committee

Following on from the expression of interest email that went to all primary schools in the Lismore District only 2 schools responded saying they would be interested in being involved in a primary schools cricket initiative. Following on from this disappointing response I met with Luke Cleaver, who co-ordinates the local NSW Cricket Big Bash program for primary school aged kids. We discussed ways that LT's might be able to enhance what is currently happening with the Big Bash program so as not to compete against it. He mentioned he would pass on the contents of our discussion to the new NSW Cricket Co-ordinator who will be replacing David Szumowski. I am waiting to hear back from this person when appointed. I am also now considering how something similar might be coordinated in the Clarence Valley.

Neil Moreton

Grants Committee

I became Chairman of this Committee recently and have found it an exciting program. We meet regularly to assess Applications for Financial Assistance, applications for which must be made online on our website.

We provide financial assistance to individuals (such as Kalani Ives, right, and Bella Stewart pictured below with Athletics Coach, Phill Newton, and Adam Gilchrist) and Applications continue to flow in. In 2015/16 we provided \$18,300 in Grants



to 33 applicants and to date our total allocations to young and disadvantaged athletes across all sports exceeds \$70,000 in less than seven years .

Grahame Gooding

Cricket Placements Committee and Adam Gilchrist

Cricket Scholarship.

Our committee had a most successful 2015 with the placing of cricketers in the UK and we are on track for an equally successful 2016. The Adam Gilchrist scholars, **Meg Phillips** from Tasmania and **Nathanael Scott** from Brisbane both had a great trip with Meg playing for Lancashire County and being County Champions in the T20 competition although they were not as successful in the 50 over matches. Meg has since gone on to play matches in the inaugural Women's Big Bash League in Australia this year. Nathanael played at Richmond CC and tallied 10 centuries during his stay in the UK..



We also sponsored **Eliza Bunner** and **Ryan O'Neill**, both of these players came from western NSW and they had very rewarding placements in Cumbria and at St Alban's CC respectively.

The Adam Gilchrist scholarship winner for 2016 is **Samantha Betts** (left), originally from Broken Hill, who now plays with the South Australian Women's Big Bash Team, The Strikers but is now enjoying a season with Hampshire in England.



The Lord's Taverners cricket placement winners for this year are **Ben McInnes** (right) who lives in Broome W.A. and we have secured him a position at St Alban's, north of London and **Georgia Hendy** (below) from Brisbane who is playing in the north of England in Cumbria.

Graeme Hoskins,.



Our House Committee

The Dinners for the Our House Residents continued as usual this year to the satisfaction of all concerned. On the afternoon of 20th October the Board of Directors of OUR HOUSE sponsored a Cocktail Party for all Teams that are involved in providing the Dinners this Year. This was a lovely gesture of appreciation to acknowledge the effort put in by all the Teams involved. Two hours of "drinks and nibbles" were enjoyed by all who attended in a very sociable gathering. There was a good number of Teams represented from across the District. The Board Chairman thanked all concerned for their wonderful effort and reported on the very positive feedback that they are getting from the Residents. Chairman Stan responded and thanked Chris and his Team for a lovely afternoon and assured the Board that the Teams get just as much satisfaction out of providing the Dinners.

Chief "Mover and Shaker" on the Our House Board is Rebekka Battista, here pictured with several of our branch members at the function.

Warren Noble



T20 Secondary Committee

The T20 Committee conducted the 2015 High Schools T20 over three days being OCT 14 and Nov 4 and 11. 26 teams registered with an even mix of both public and private schools represented. The winners were MATTHEW PHELPS SHIELD Boys 7/8.....Trinity Catholic College. Player of match in final was Charles Mitchell (Trinity)

ADAM GILCHRIST SHIELD Boys 9/10....St Johns Woodlawn ...Player of match in final was Dane Pratt (St Johns)

LYN LARSEN SHIELD Girls (Finalists right)St Johns Woodlawn ...Player of match in final was Olivia Osborne (St Johns)

All three teams went on to contest the Cricket NSW interzone final in Sawtell on November 23 with Trinity and St Johns each winning one final.



Sincere thanks to all umpires and ground marshalls who ensured the smooth running of the event.

John Bancroft

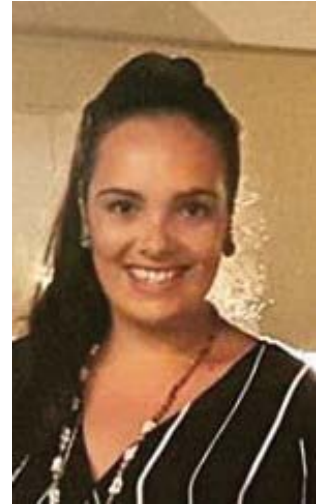
Internship Committee

Unfortunately we have been unsuccessful in securing the assistance of an intern from Southern Cross University for 2016.

However we have recently entered into an agreement with Southern Cross University regarding a placement with us through their Bachelor of Occupational Therapy course. We have had two fourth year students who successfully im-



plemented Disability Sports in the Tweed. We are working with John McCaffery in relation to the project. The fourth year OT students working with us on the project are **Simone Bennett** (left) and **Hannah Morris** (right).
Jenny Cook.



Regional Development Committee

As the then Regional Projects Committee, we conducted the Narrabri Annual Sports Awards Dinner at Narrabri with Jodie Fields, Jim Maxwell and Steve “Bull” Trindall as our guests.

A great night and the request that now we have re-introduced this to the town, that we conduct it each year from here on! We also have an impressive group of Taverners at Inverell, some of them pictured right.

A revised program committee, possibly to be called the **Regional and Corporate Development Committee**

will soon been established which will embrace the Regional Projects Committee and the Corporate Sponsorships Committee. Members of this committee will include regional people who will be assisting to attract sponsors from their centres.

We are now celebrating the addition of Lismore Toyota and Lismore City Printery to our list of Corporate Sponsors to join our previous eighteen whose annual donations enable us to fund our University Scholarships Program.

Stan Gilchrist.



Sports Camp Committee

Our Sports Camp, held on four days in the last week of January at Lake Ainsworth Fitness Camp, Lennox Head, has been an outstanding success.

Twenty-seven campers and four visiting parents/supervisors came from our Western outposts of Narrabri, Wee Waa, Pilliga, Moree and Ashford. A large percentage of these children had not previously seen the ocean. The water sports of snorkelling, sailing, kayaking etc. really suited the needs and provided something special.

About half of the campers were of Aboriginal families. Some of the campers will be targeted as talented athletes/netballers/cricketers etc. These 'special' people have been noted for future programs.

The general supervision, particularly at night, was carried out by visiting parents, Taverners members and some of our University Scholarship holders.

A review provided evidence of enjoyable and memorable experiences, some of which will provide lifetime memories. Those involved have agreed that the additional expense of using instructional staff and full-time camp fees was worthwhile. All agreed that the accommodation and food were ideal.

Interested Taverners members visited the camp as support people and observers. Some of these will be taking up a place on our future camp organising committee.

Don Whitelaw.



University Scholarships Committee



In 2015 we added our third student to the SCU list of two. The student is **Tineka Frampton** (left) studying a Bachelor of Arts and a Bachelor of Education (Primary/Secondary). All three students completed the year with commendable results and will continue their studies in 2016. **Alanna Weis** (right) enters her final year, having performed very well in 2015. **Lachlan**



Crowther (below) decided at the end of 2015 to change direction and in 2016 will complete his Degree to become a Physiotherapist. He will then carry on for a further 18 months' Masters. He has been advised that we will consider whether or not to provide a scholarship for these 18 months at the completion of 2016.

For the first time we provided a scholarship at UNE Armidale to **Jessica Laughton**. Jess (right) studied for a Bachelor of Historical Enquiry and Practice and has now advised us that she is changing to a Bachelor of Arts majoring in Ancient History and Archaeology.



We recently interviewed for the 2016 Scholarship at SCU and chose **Shana Miller**. Shana (right) will be studying a Bachelor of Psychological Science as well as a Bachelor of Clinical Sciences. With Credits from 2015 Shana will complete these two degrees by the end of 2017



Through a lack of further Sponsors we will not be adding another student at UNE in 2016.

All current students have joined us with our work in assisting disadvantaged youth and we thank them for this. Three assisted conduct the Camp for Disadvantaged Youth at Lake Ainsworth Sport and Recreation Centre in January 2016

Denis Byrne.

Disabilities Sports Committee

We have visited Wilson Park Special School to spend time with younger students and to deliver some equipment which was well received. As a result of this visit the school will get back to us with dates for sport outings at GSAC including a joint day with Biala School and we will also be visiting the school again to work with younger students and look at dream cricket activities.

Biala School will also be arranging suitable dates for our activities.

Recently I attended The National Judo event at GSAC where we had sponsored Medals that were made locally by a vision impaired worker. The event is held every two years and this was only the fourth time it had been held. Competitors with a wide range of Disabilities such as Cerebral Palsy, Vision impairment and Intellectual disabilities came from as far away as South Australia, Sydney, Queensland and

the Central Coast. There were about thirty participants and this was the largest field they had ever had and great fun was had on the day by both competitors and supporters. Taverner's was thanked for our support at the medal ceremonies and it was greatly appreciated. We will be following up with Red Inc and PCYC to see where we can work together again in the future.



I attended Dream Cricket gala day in Bowral with a representative from Lismore West Rotary. The day in Bowral was fantastic attended by nearly 200 young people with various disabilities and at least that number again of main stream high school students who acted as volunteers and coaches. It is a very exciting community event and was well supported by Bowral Rotary and township and would be an exciting concept to be involved in here. I attended meetings with Rotary to report on the Bowral day along with their representative, to explore the future of Dream Cricket in our region.

We were approached by Queensland Taverners about our version of Tabletop cricket and we have had a set manufactured for them.



John McCaffery

Events Committee

There were two major functions and several other smaller events this year. One of the best programs we have held was the series of events based around David Alley,



(pictured below with Taverners and Lismore City officers) who ran around Australia raising money for the White Cloud Foundation – a mental-health facility. We helped launch Dave on his journey in April, followed him on Facebook and on ABC Radio (mainly with Macca in

“Australia All Over” on Sundays) then conducted a major fund-raising dinner when he returned in October.

With Adam Gilchrist, our Patron, playing the role of interviewer rather than interviewee, and with a main attraction being the auctioning of one pair of Dave’s “stinky” worn-out runners, the night was a resounding success.

We also ran our now-annual Sports Legends night – a celebration of local sporting stars who have represented Australia in any sport. Again an excellent evening.

In addition we re-introduced the Darrel Chapman Fun Run, an event commemorating the man responsible for the establishment of the North Coast Academy of Sport based on Southern Cross University. This event attracted runners from all over Australia and was a singular success.

Matthew Barlow.



Social Committee

Whilst there is a social aspect to all of the activities we involved ourselves in last year, the only organised social events were a barefoot bowls morning held on a Sunday in May and an informal cricket match which was held at “Kindal Glen” during October (Scorers shown at far right and a bat awaiting the resumption of play, centre).

Chris Shevellar.



BALANCE SHEET AS AT 30th. JUNE, 2016.

<u>30.06.15</u>		<u>30.06.16</u>
\$		\$
	<u>CAPITAL ACCOUNT</u>	
	<u>GENERAL</u>	
30,386.49	Balance 01.07.16	38,473.25
8,086.76	Excess Income/(Expenditure)	<u>(11,931.16)</u>
		26,542.09
	<u>SCHOLARSHIP ACCOUNT.</u>	
10,481.60	Balance 01.07.16	5,780.61
<u>(4,700.99)</u>	Excess Income/(Expenditure)	<u>(1,138.96)</u>
<u>5,780.61</u>		4,641.65
	<u>ADAM GILCHRIST SCHOLARSHIP FUND.</u>	
<u>24,403.38</u>	Balance 01.07.16	24,403.38
	Excess Income	<u>1,863.11</u>
		<u>26,266.49</u>
<u>68,657.24</u>		<u>57,450.23</u>
	Represented by :- <u>CURRENT ASSETS.</u>	
	<u>GENERAL ACCOUNT</u>	
200.00	Cash on Hand	200.00
37,009.55	Suncorp – Business Saver A/C	22,182.90
	Suncorp – Everyday A/C	1,199.24
2,158.70	Stock	2,092.95
<u>1,000.00</u>	Prepayment	-
<u>40,368.25</u>		<u>25,675.09</u>
	<u>SCHOLARSHIP ACCOUNT.</u>	
470.00	Suncorp – General A/C	-
<u>8,510.61</u>	Suncorp – Business Saver A/C	<u>9,641.65</u>
<u>8,980.61</u>		
	<u>ADAM GILCHRIST SCHOLARSHIP ACCOUNT.</u>	
24,403.38	Suncorp – Business Saver A/C	24,777.48
	Suncorp – Everyday A/C	989.01
	General Fund – ref. Loan Repaid	<u>500.00</u>
<u>73,752.24</u>		<u>26,266.49</u>
	<u>FIXED ASSETS</u>	
880.00	Computer HP Laptop –Value 01.07.15	415.00
<u>473.00</u>	Less Depreciation at 25% p.a. P.C.	<u>415.00</u>
<u>415.00</u>		Nil
-	Computer HP View Sonic – Purchased 06.08.151,763.00	
	Less Depreciation at 25% P.C.	<u>396.00</u>
		1,367.00
<u>74,167.24</u>	<u>TOTAL ASSETS</u>	<u>62,950.23</u>
	<u>LESS CURRENT LIABILITIES.</u>	
3,200.00	Income in Advance- Scholarship Fund	5,000.00
<u>2,310.00</u>	General Fund –Adam Gilchrist S.F.	<u>500.00</u>
<u>5,510.00</u>		<u>5,500.00</u>
<u>68,657.24</u>	<u>NET ASSETS</u>	<u>57,450.23</u>

GENERAL ACCOUNT.

	\$	\$	\$
<u>INCOME</u>			
Membership Subscriptions	8,630.00		
Cricket Development – Indonesia	600.00		
Cricketers to England	3,500.00		
Donations	1,698.55		
Functions - Adam Gilchrist/Dave Alley	21,776.67		
Interest	669.81		
Merchandise - Net Profit	187.00		
Narrabri Awards	1,320.00		
National Raffle	14,936.50		
T20 Cricket	380.00		
Trinity Race Day	<u>190.00</u>	<u>53,888.53</u>	
<u>LESS EXPENDITURE</u>			
Bank Fees	464.18		
Blind Cricket	1,250.00		
Computer	319.80		
Cricket Development Indonesia	600.00		
Cricketers to England	1,700.00		
Depreciation	811.00		
Disability Sports	879.00		
Dream Cricket	650.00		
Friendship Games	510.00		
Functions Adam Gilchrist/Dave Alley	12,554.40		
Grants Athletics	18,310.00		
National Conference	2,033.35		
Contribution	500.00		
Levy	2,992.50		
Raffle	100.00		
Narrabri Awards	1,149.75		
Our House	208.34		
Post Office Box Rental	121.00		
Postage	44.95		
Printing & Stationery	1,188.51		
Race Day	900.00		
School T20 Cricket	1,394.00		
Sundries	260.91		
Top Sports Camp	14,975.00		
Web Site	1,169.00		
Aprons written off (not for sale)	<u>734.00</u>	<u>65,819.69</u>	
<u>Excess Expenditure over Income for Year</u>	13	<u>(\$11,931.16)</u>	

SCHOLARSHIP FUND.

<u>INCOME</u>	<u>£</u>	<u>£</u>	<u>£</u>
Sponsorship	24,300.00		
Interest	264.04		
Raffle	<u>1,297.00</u>		
		25,861.04	
<u>LESS EXPENDITURE</u>			
Scholarship – S.C.U.	20,000.00		
Scholarship – U.N.E.	<u>7,000.00</u>	<u>27,000.00</u>	
<u>Excess Expenditure for Year</u>			<u>(\$1,138.96)</u>

ADAM GILCHRIST SCHOLARSHIP FUND

<u>INCOME</u>			
Sponsorship – Etihad Airlines	10,000.00		
Interest	524.10		
Scholars Loan (\$1,000) repaid	500.00		
Cricketers to England	<u>794.00</u>	11,818.10	
<u>LESS EXPENDITURE</u>			
Scholars Allowance	9,954.99	<u>9,954.99</u>	
<u>EXCESS INCOME OVER EXPENDITURE.</u>			<u>1,863.11</u>

FINANCE COMMITTEE REPORT

(The audited financial reports follow)

The Finance committee had another busy but rewarding year.

For the first time we were able to acquire a computer accounting package (QuickBooks/Reckon). I would like to thank Gaetano Astone from La Faro Accountants and Advisors and his staff for their donation, assistance and advice in setting up the package. This new system has enabled us to also set up invoicing, writing receipts (which can be emailed or printed depending on customer's requirements).

This new program has allowed us to also set up a general ledger which allows us to have timely (monthly) profit & loss and balance sheet reports for our executive meetings (and members where required.) We have been able to set up separate profit & loss reports for each of our programs.

Also for the first time we have been able to utilise the package to set an annual budget for each of our programs .This has allowed us to produce reports comparing actual to budget for the month and year to date which will be of great benefit for future planning.

We are progressing towards utilising our internet banking system more to pay creditors, grant recipients etc. where possible.

I thank in particular our Treasurer John Buttrum for his help and no fuss, efficient approach to the day to day functions of banking, creditor payments and all the other duties he performs.

I also thank our Honorary Auditor John Swain for his assistance and knowledge in auditing our statements.

Ralph Gregory

Chairman, Finance Committee

Our Corporate Sponsors And Community Partners.

We are very proud to partner with **Southern Cross University** Lismore and our seventeen corporate and five special event sponsors:-

Trinity Catholic College

La Faro Accountants

Suncorp Bank

Etihad Airlines

Lismore Priceline Pharmacy

Kids on 4th

Pacific Farms Macadamias

Trevan Auto Group

Lismore Toyota

Lismore Workers Club

James Duffy Chiropractor

Lismore City Printery

M & T Tyres, Lismore

Ntech Media

The Civic Hotel, Lismore

Colourworks Lismore

Mountain Blue Farms Blueberries

Printfresh Inverell

Lismore Timezone Watchmakers

Lismore Cruise and Travel

Gabba Sporting Products

Simes Bros Buses

Rhino Water Tanks

Laser Plumbing & Electrical

With the support from Southern Cross University Lismore these sponsors enable us to continue The Rising Star University Scholarship as well as helping the young and disadvantaged gain a sporting chance.

At our events throughout the year we have strongly promoted the relationship we have with our corporate partner and sponsors and we look forward to continuing the relationship in the coming years

OUR CORPORATE AND COMMUNITY PARTNERS

